

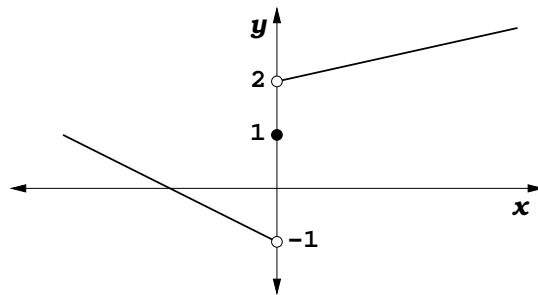
Math 181 Quiz 3 Version A

1. Define $\lim_{x \rightarrow a} f(x) = L$ using inequalities in terms of ϵ and δ .

2. Fill in the blanks

$$\lim_{x \rightarrow 0^-} f(x) = \boxed{} \quad \lim_{x \rightarrow 0^+} f(x) = \boxed{} \quad \lim_{x \rightarrow 0} f(x) = \boxed{}$$

for the function $y = f(x)$ whose graph is given by



3. Find the limit $\lim_{x \rightarrow 2} \frac{x^2 - x - 2}{x - 2}$.